

15-Year Climatology of BSRN Measurements at Chesapeake Light Station (CLH)



- 25km East of Virginia Beach, Virginia, USA
- Water Depth is shallow: 10m
- Coordinates: 36.90 N, 75.71 W

Bryan Fabbri¹, Greg Schuster², Fred Denn¹, Robert Arduini¹, Jay Madigan¹

¹ - Science Systems and Applications, Inc. (SSAI) - Hampton, Virginia, USA

² - NASA Langley Research Center – Hampton, Virginia, USA

Introduction:

- Why was CLH established?
- CLH instrumentation used in Climatology's
- Climatology's of Downwell LW, Downwell SW Global
- Climatology's of Upwell SW and LW
- Tower effect Issue for Upwelling Instruments
- Summary and Acknowledgements

Why was CLH established?

- Validating measurements from CERES and other satellites was the primary motivation to establish CLH (also known as CERES Ocean Validation Experiment (COVE)).
- CLH has 2 advantages when viewed from a satellite

CLH is in a dark, more homogeneous background

CLH does not have an island effect



Island Effect

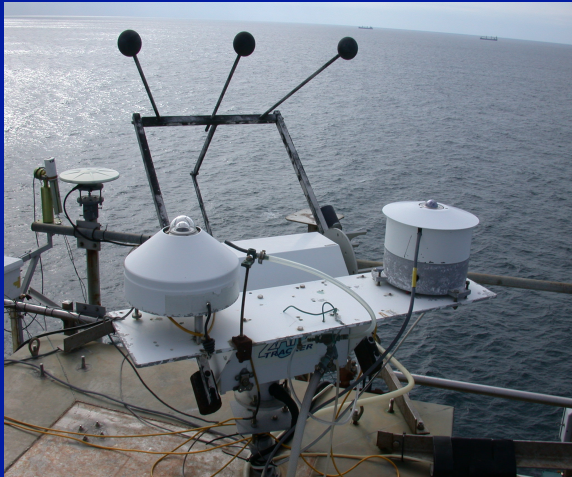


Guadalupe, Mexico:
1.3 km maximum altitude
25 km long
260 km west of Baja California

MISR image; June 11, 2000
earthobservatory.nasa.gov

Downwelling Instrumentation

Height Above Sea Level: ~37m

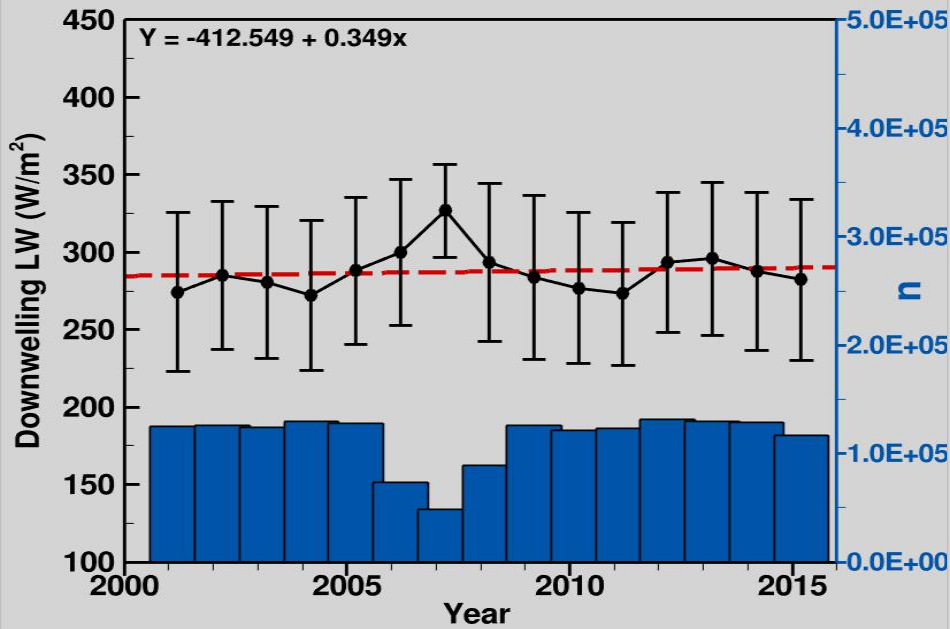


Upwelling Instrumentation

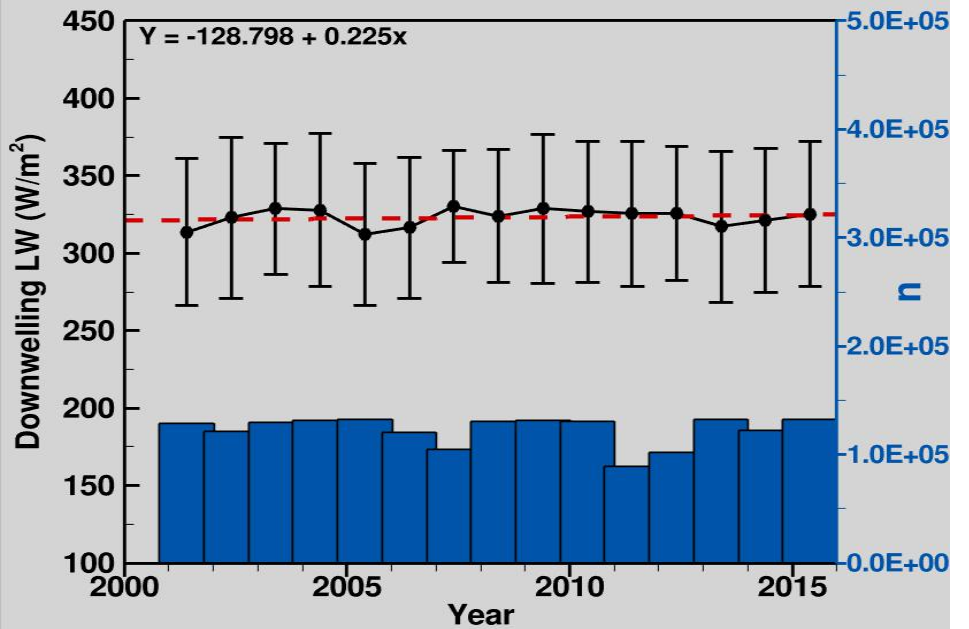
Height Above Sea Level: ~21m



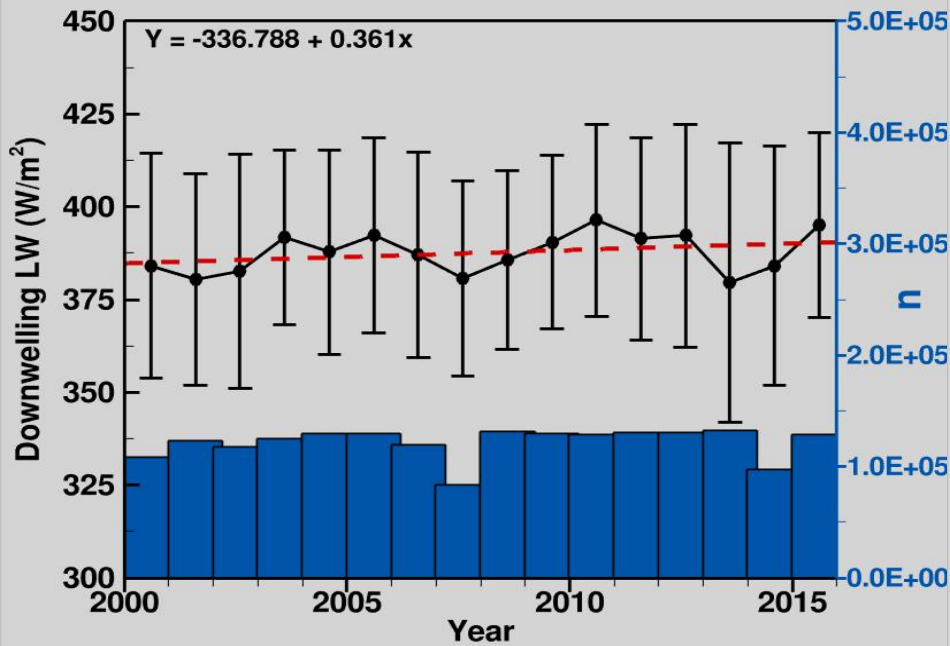
2001-2015 Winter (DJF) Means



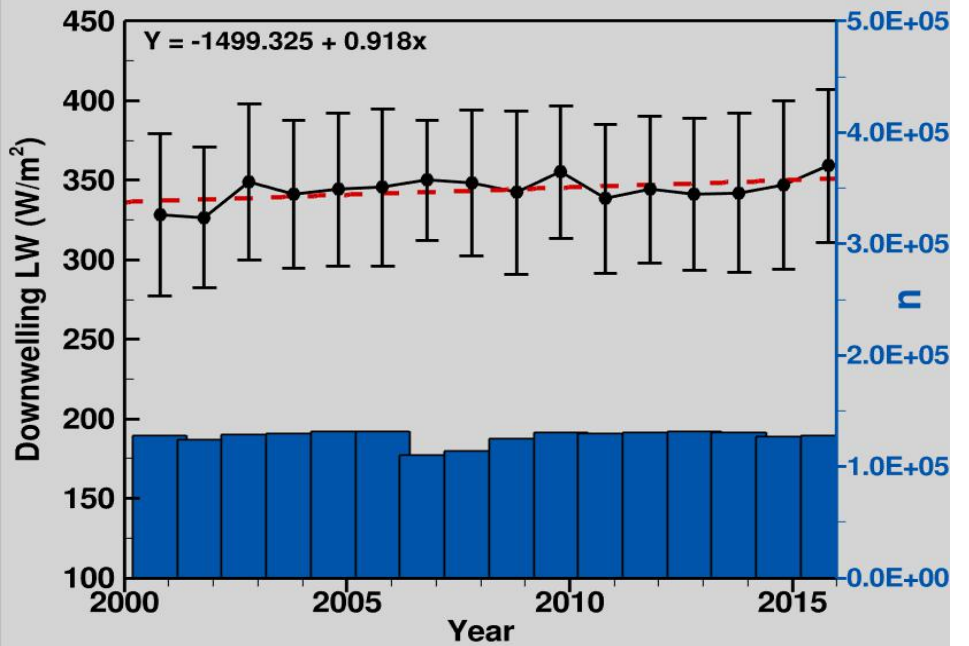
2001-2015 Spring (MAM) Means



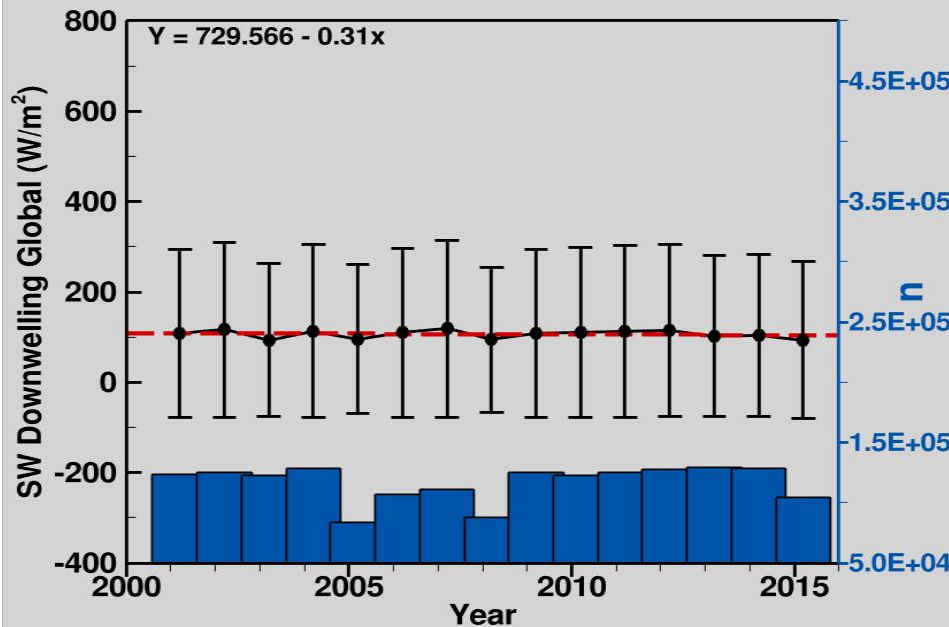
2000-2015 Summer (JJA) Means



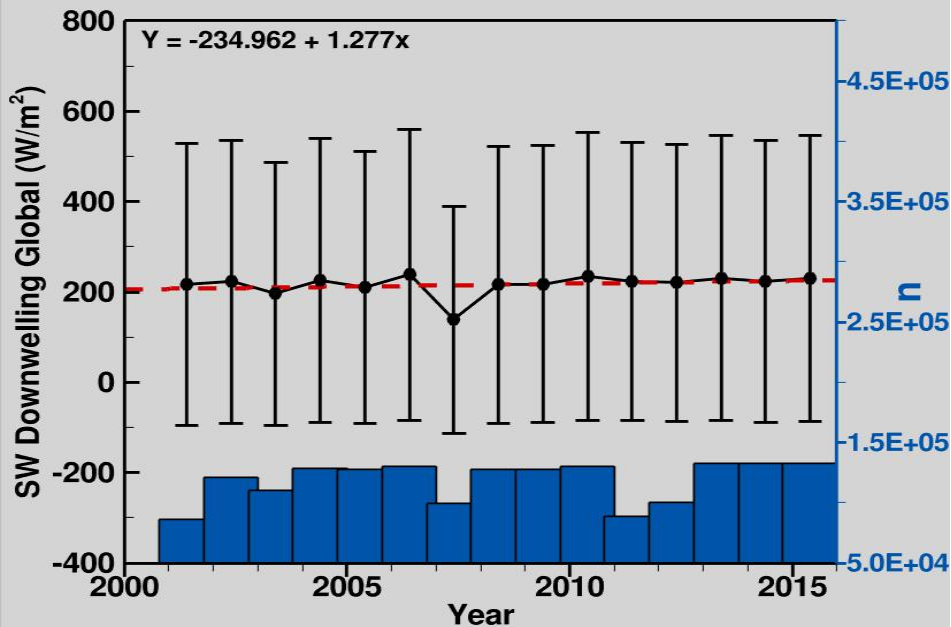
2000-2015 Autumn (SON) Means



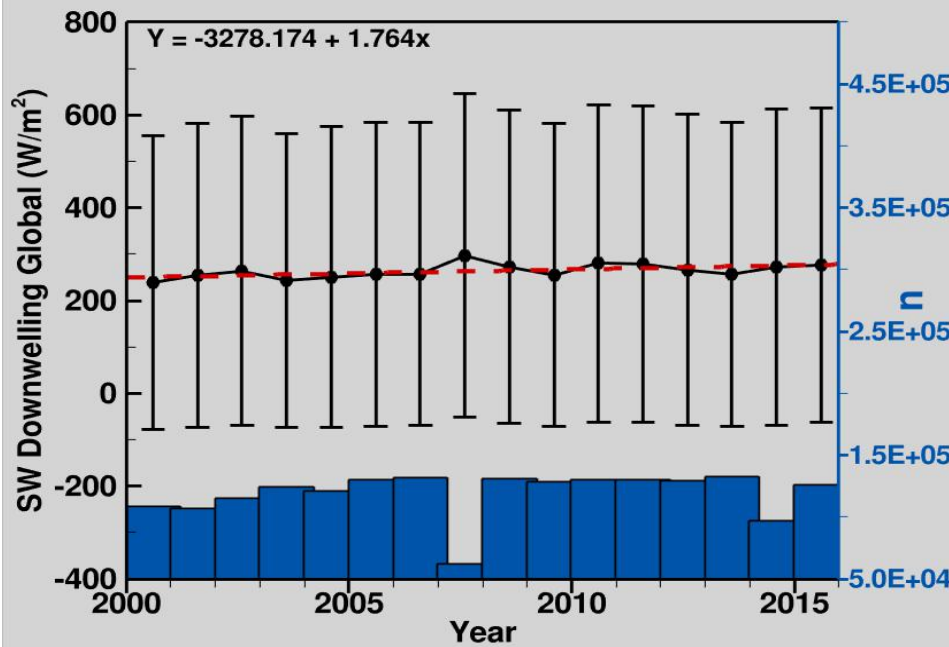
2001-2015 Winter (DJF) Means



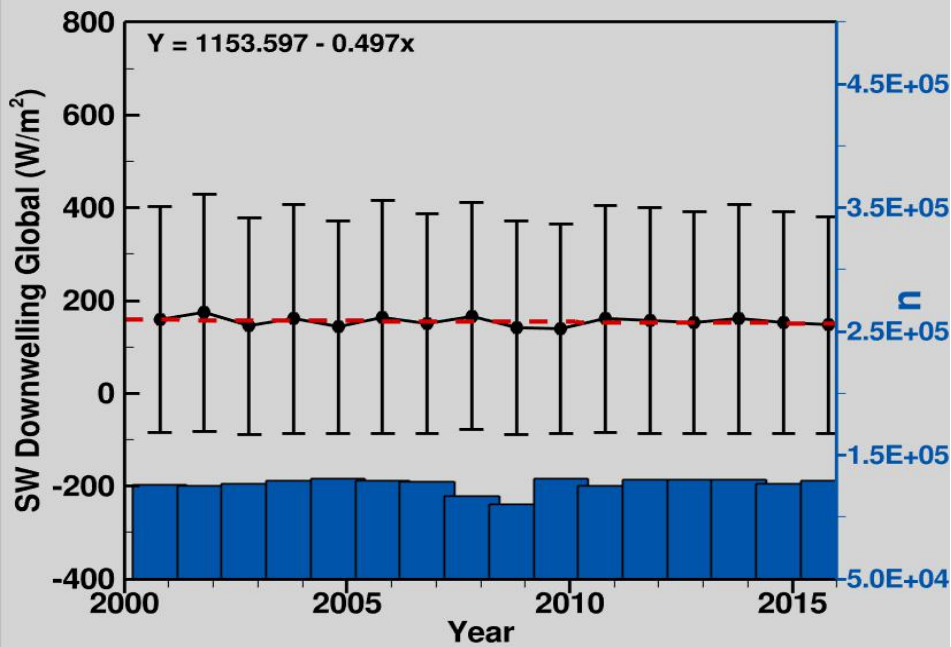
2001-2015 Spring (MAM) Means

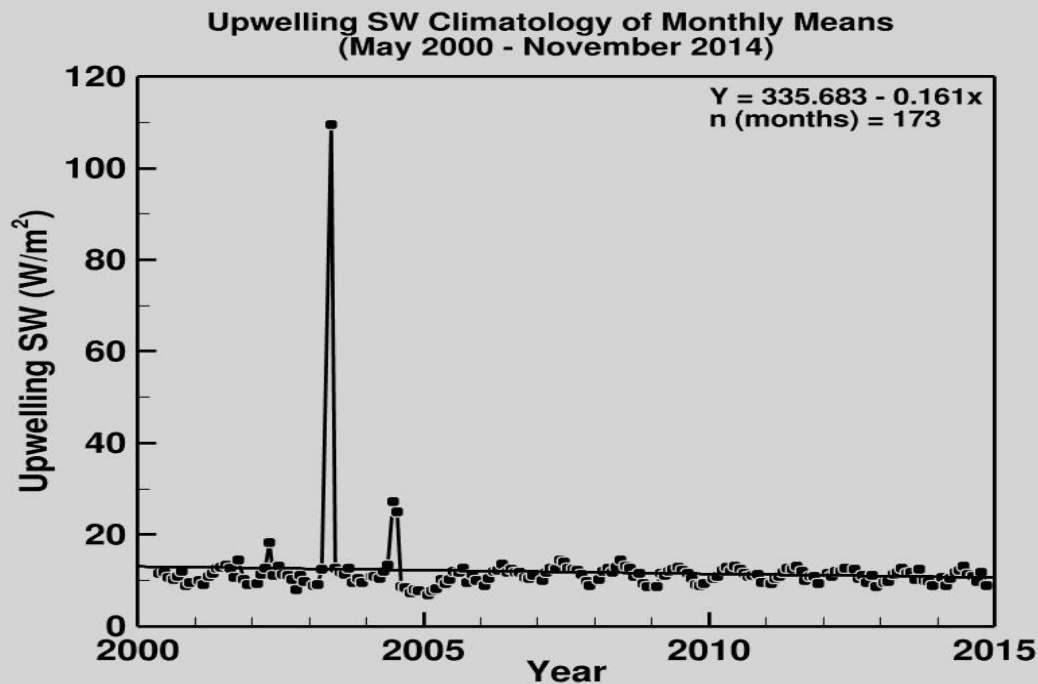


2000-2015 Summer (JJA) Means



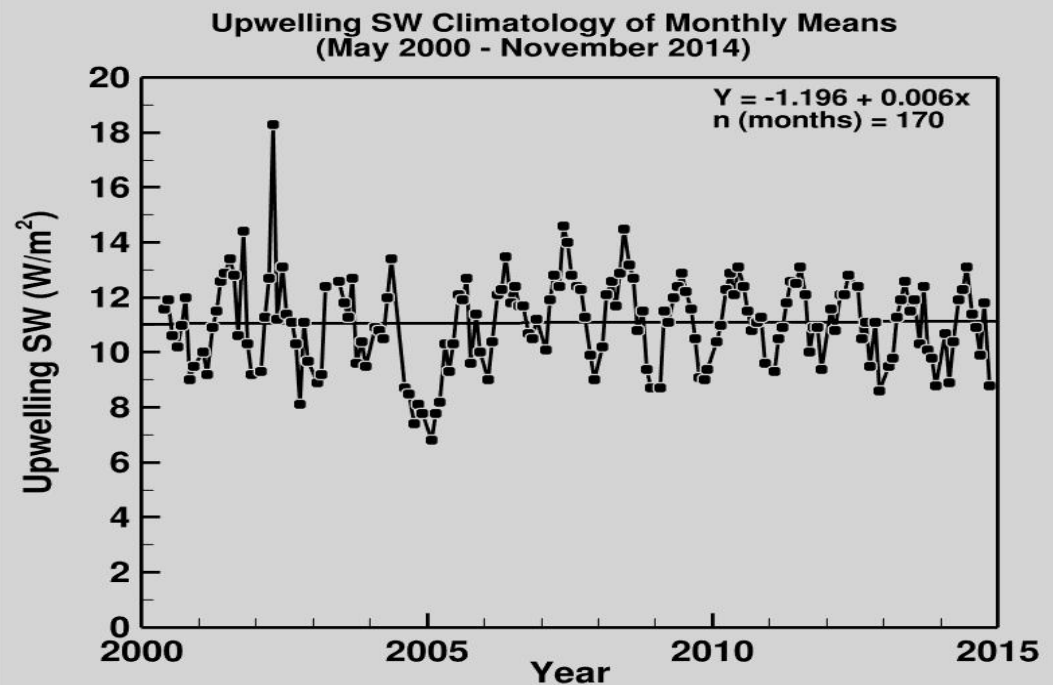
2000-2015 Autumn (SON) Means



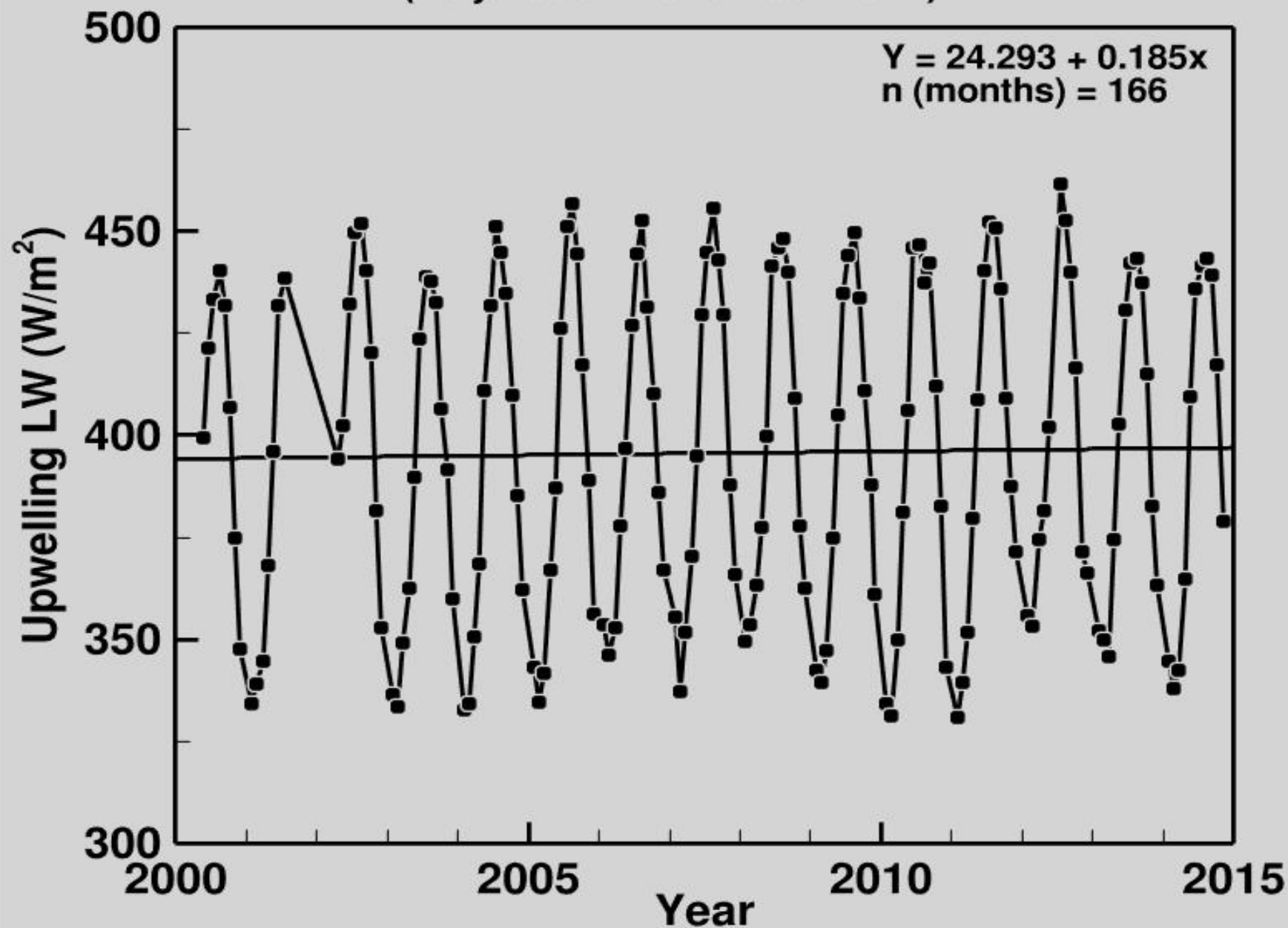


Upwelling SW. All points.
A few anomalous means.

Upwelling SW. Removed
the anomalous means.



Upwelling LW Climatology of Monthly Means (May 2000 - November 2014)



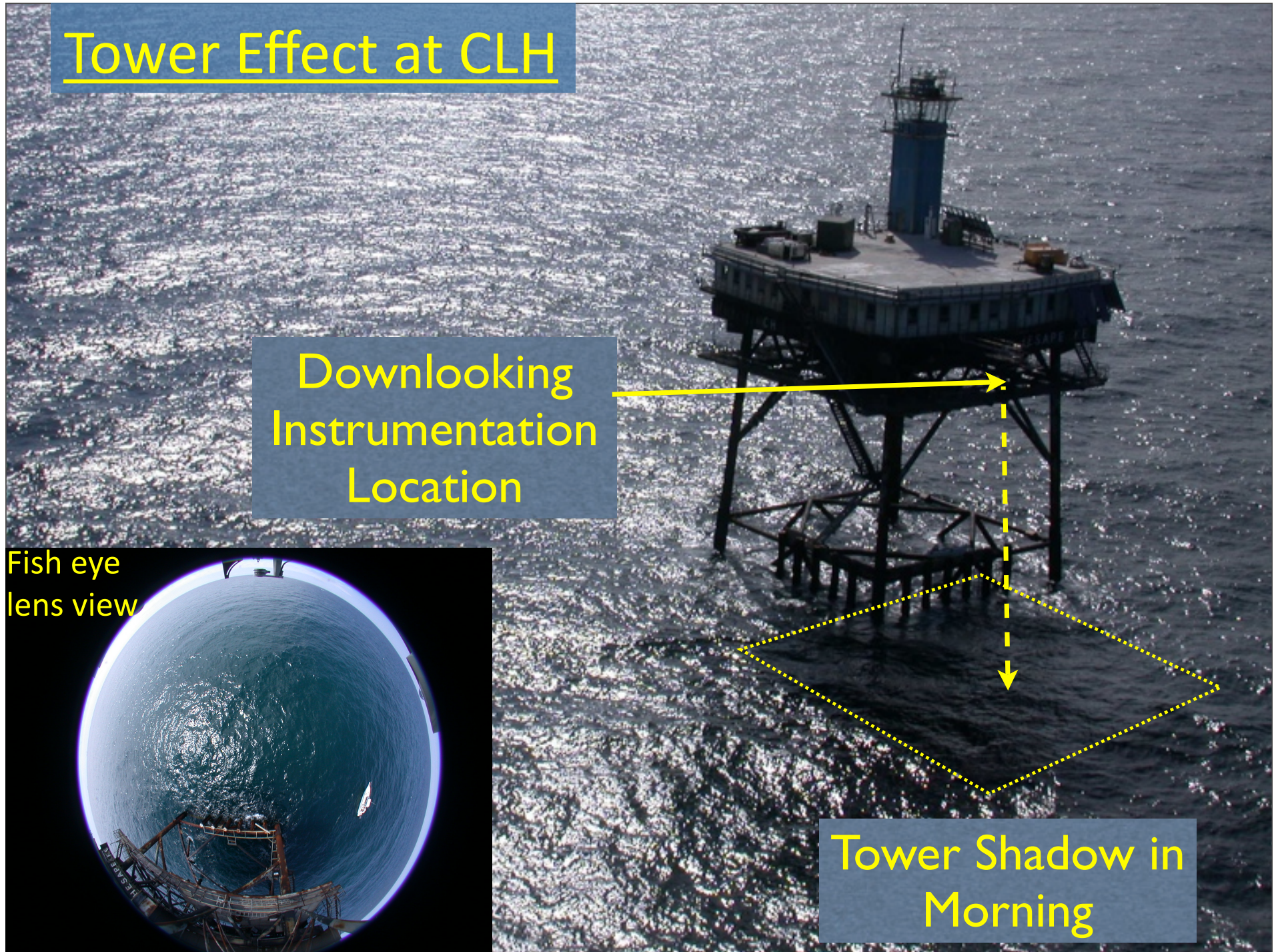
Tower Effect at CLH

Downlooking
Instrumentation
Location

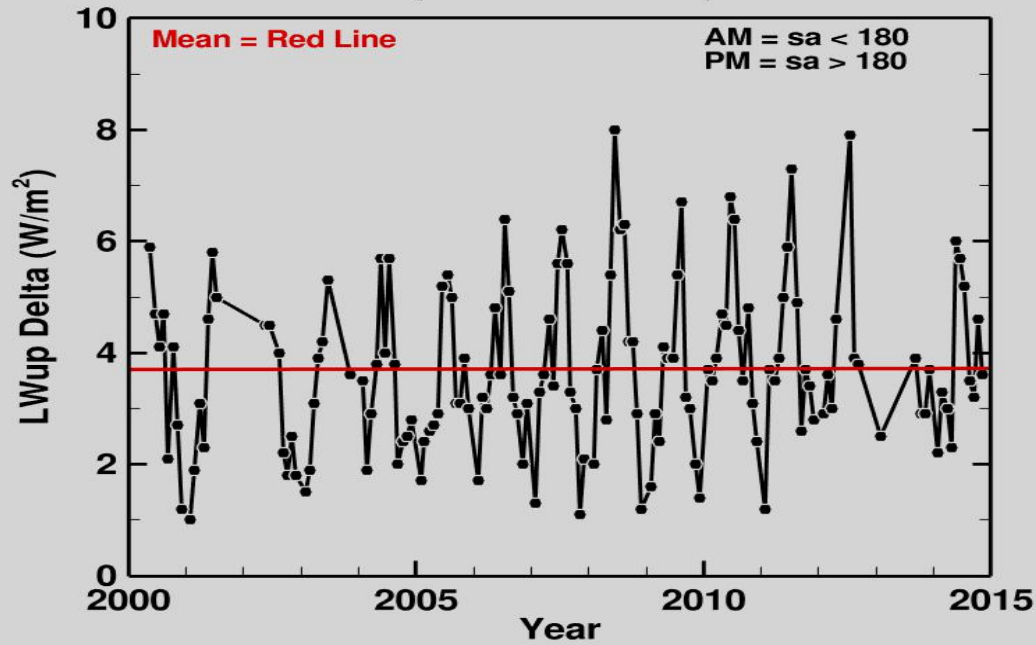
Fish eye
lens view



Tower Shadow in
Morning

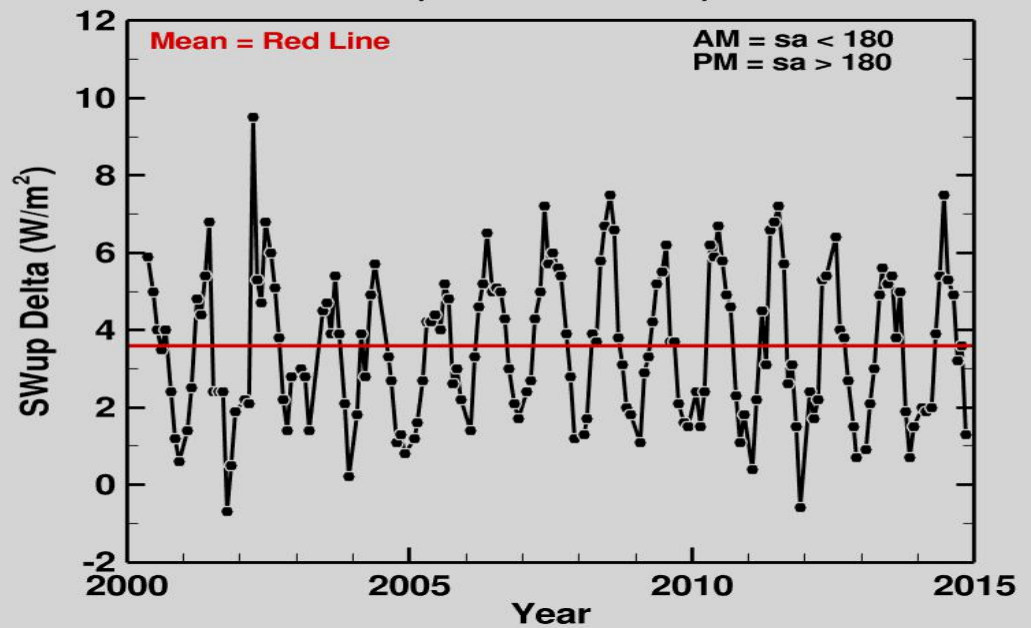


LWup (PM) - (AM) Monthly Statistics
(Years 2000-2014)



Monthly Upwelling
LW Deltas (PM - AM)

SWup (PM) - SWup (AM) Monthly Statistics
(Years 2000-2014)



Monthly Upwelling
SW Deltas (PM - AM)

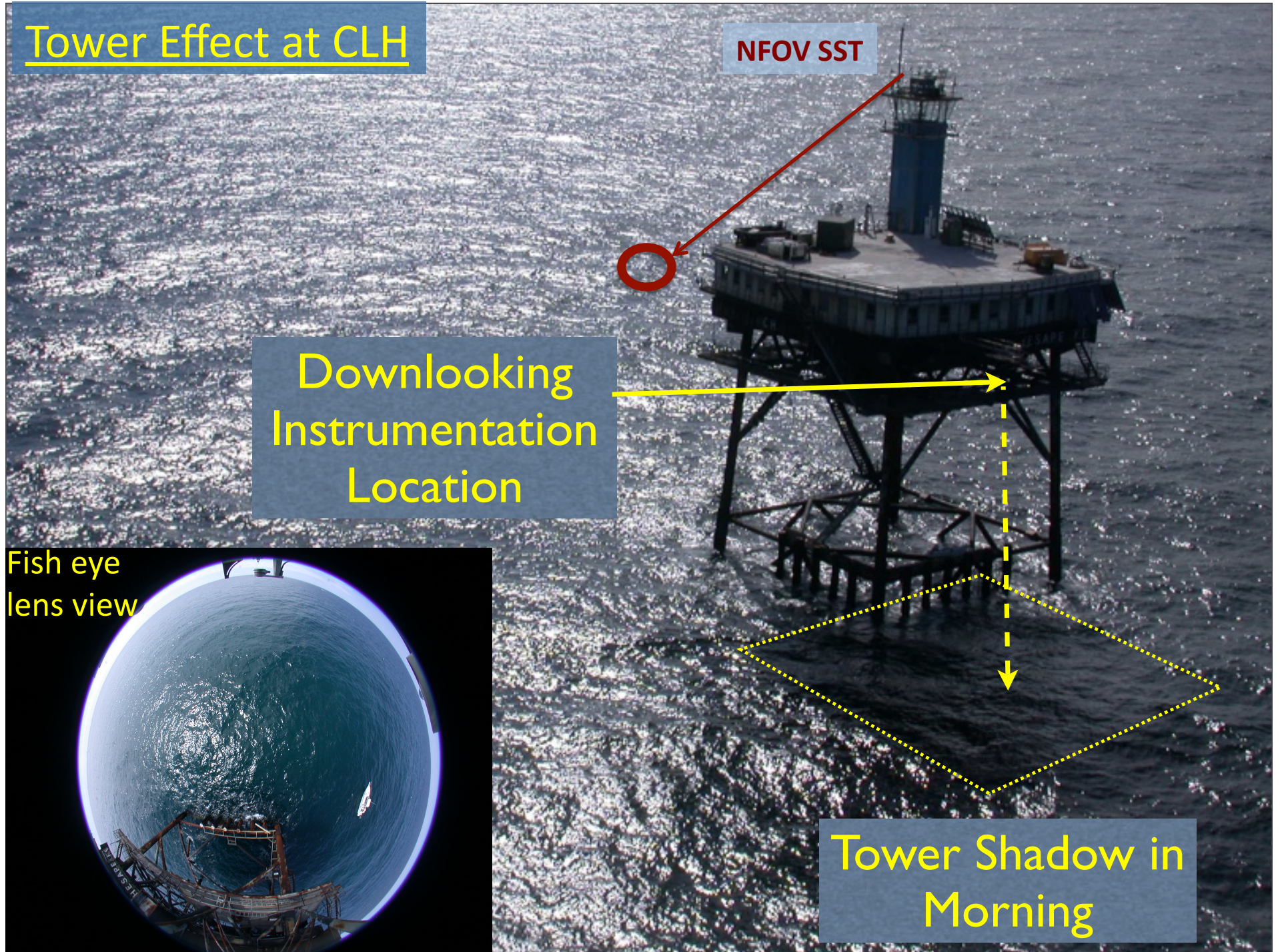
Tower Effect at CLH

NFOV SST

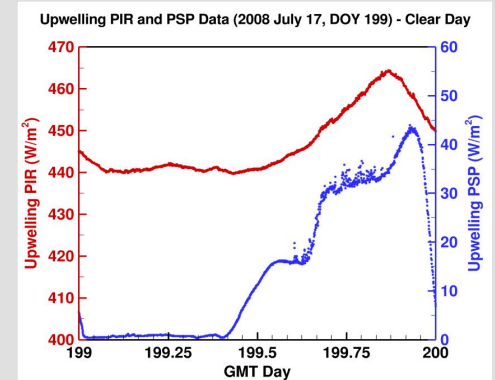
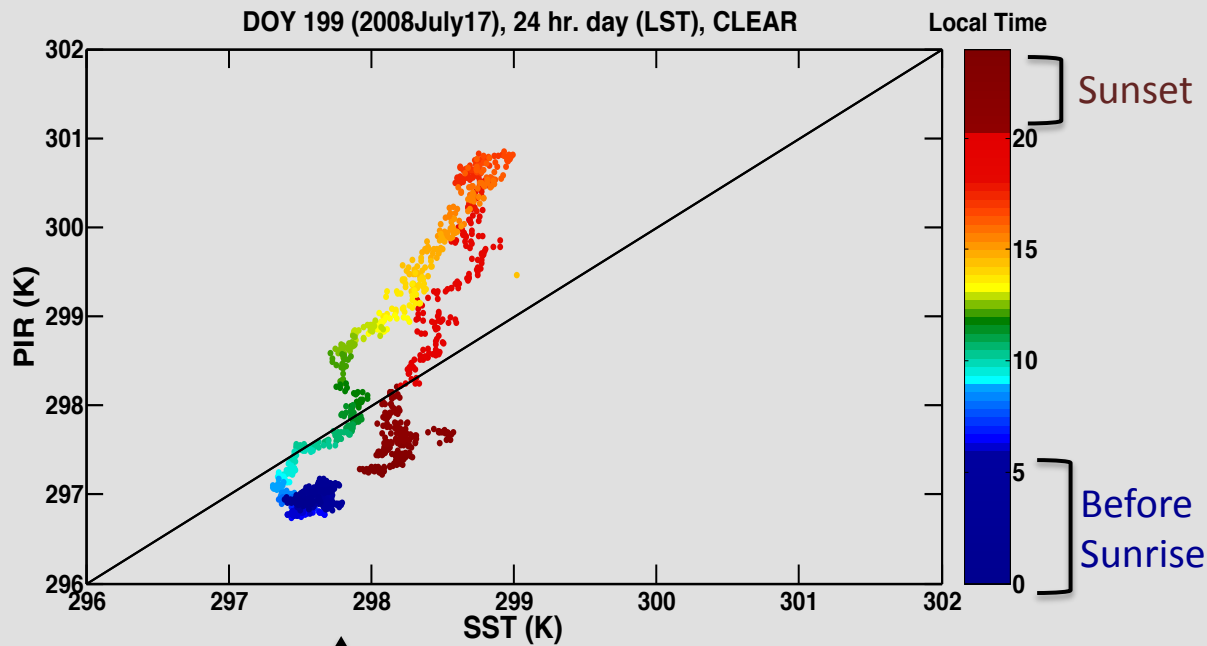
Downlooking
Instrumentation
Location

Fish eye
lens view

Tower Shadow in
Morning

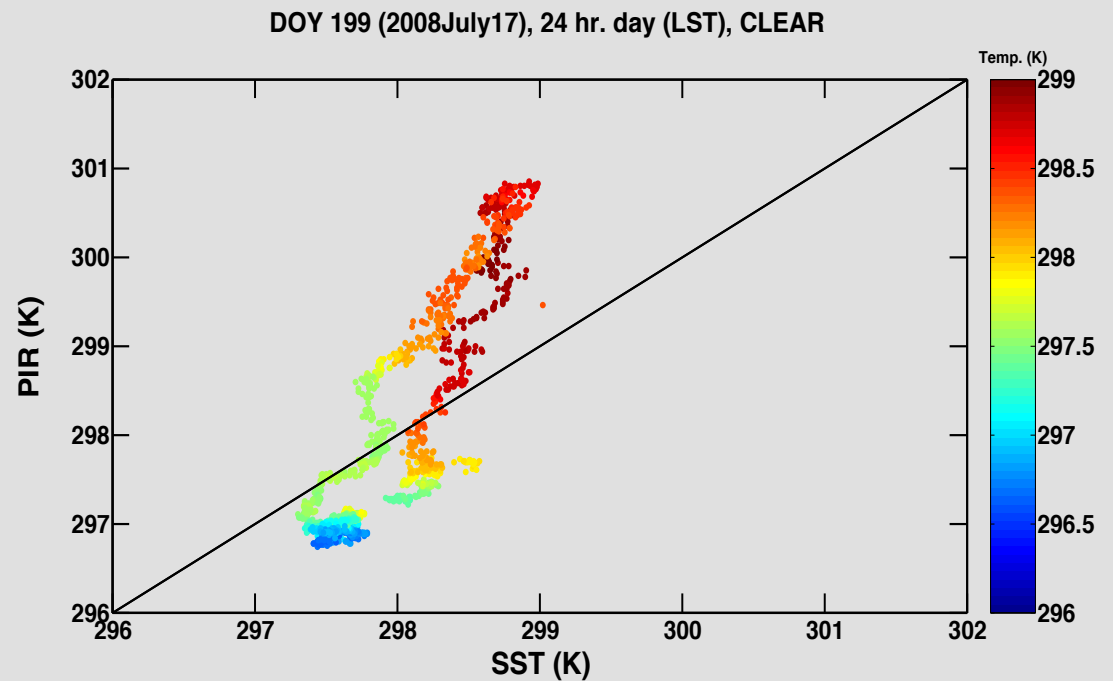


Tower Effect On Clear Summer Day

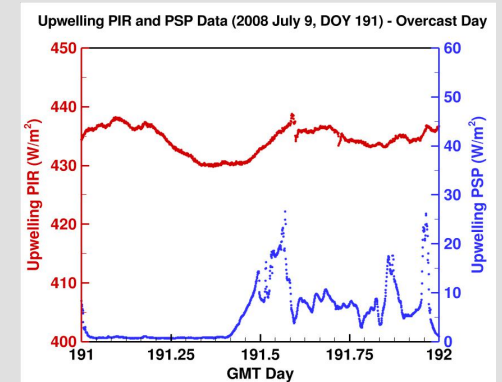
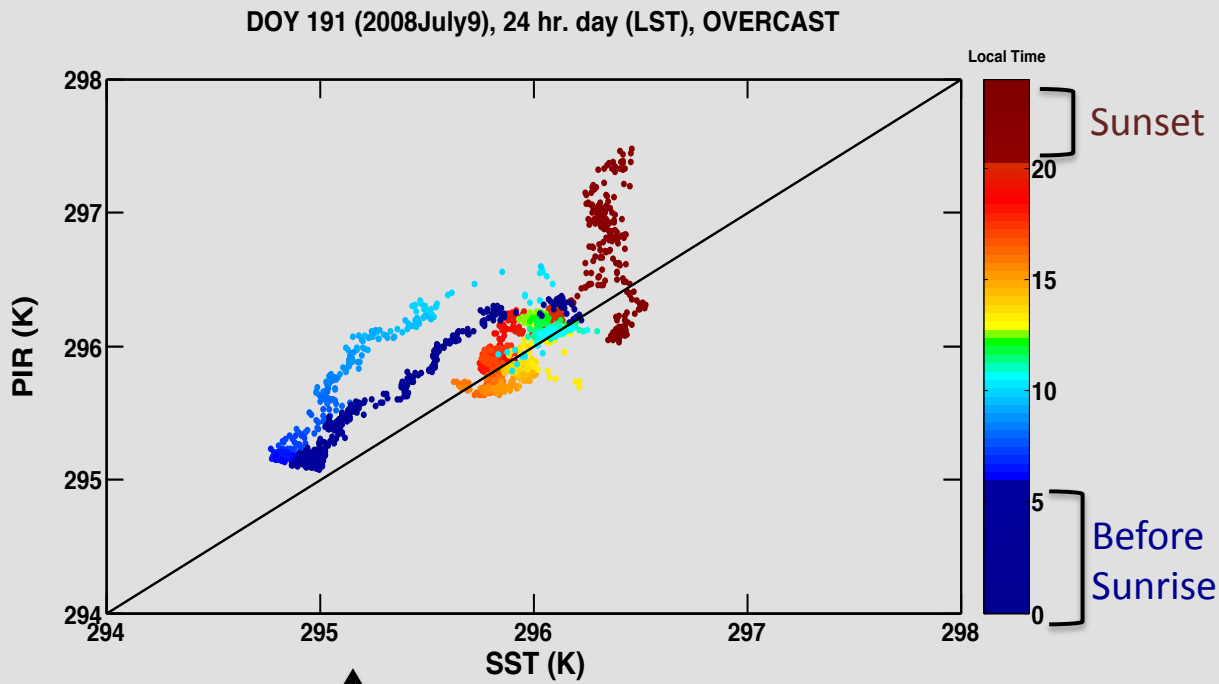


Upwell PIR (K) vs SST (K)
Contoured by Local Time

Upwell PIR (K) vs SST (K)
Contoured by Ambient
Temperature (K)

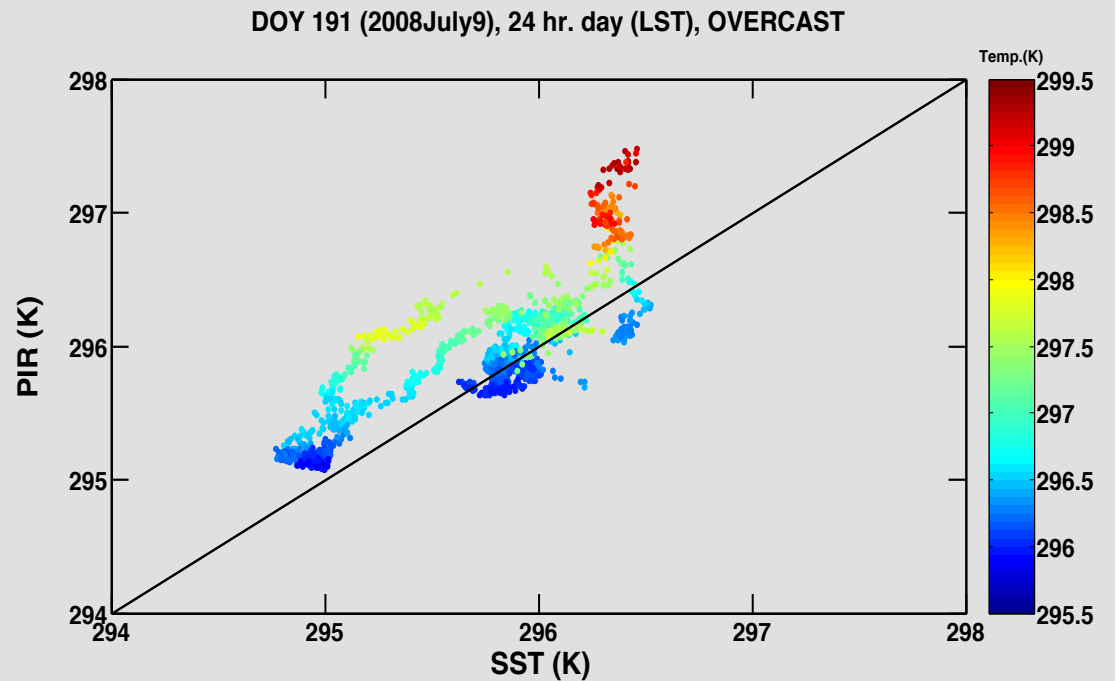


Tower Effect on Overcast Summer Day

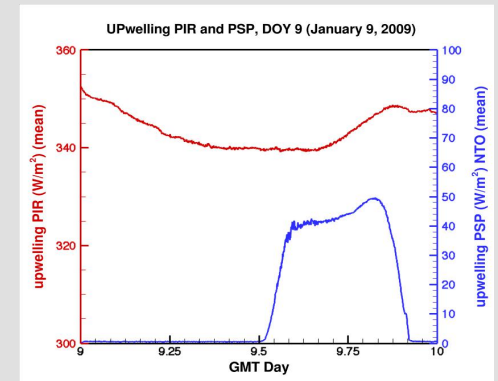
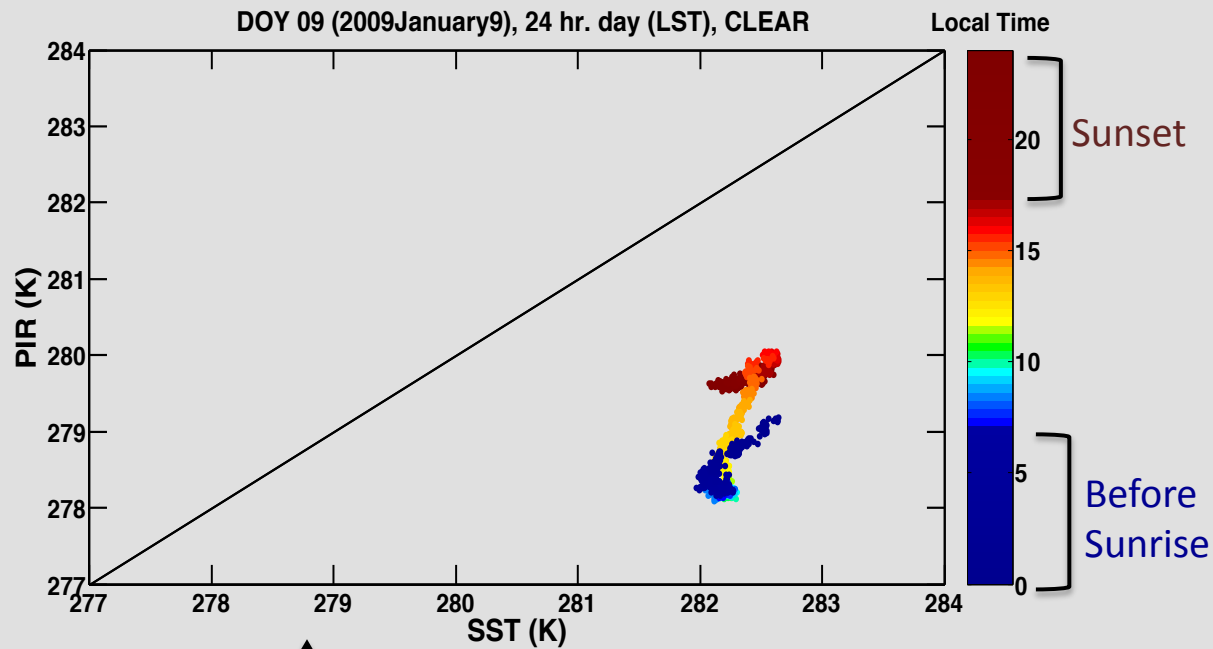


Upwell PIR (K) vs SST (K)
Contoured by Local Time

Upwell PIR (K) vs SST (K)
Contoured by Ambient
Temperature (K)



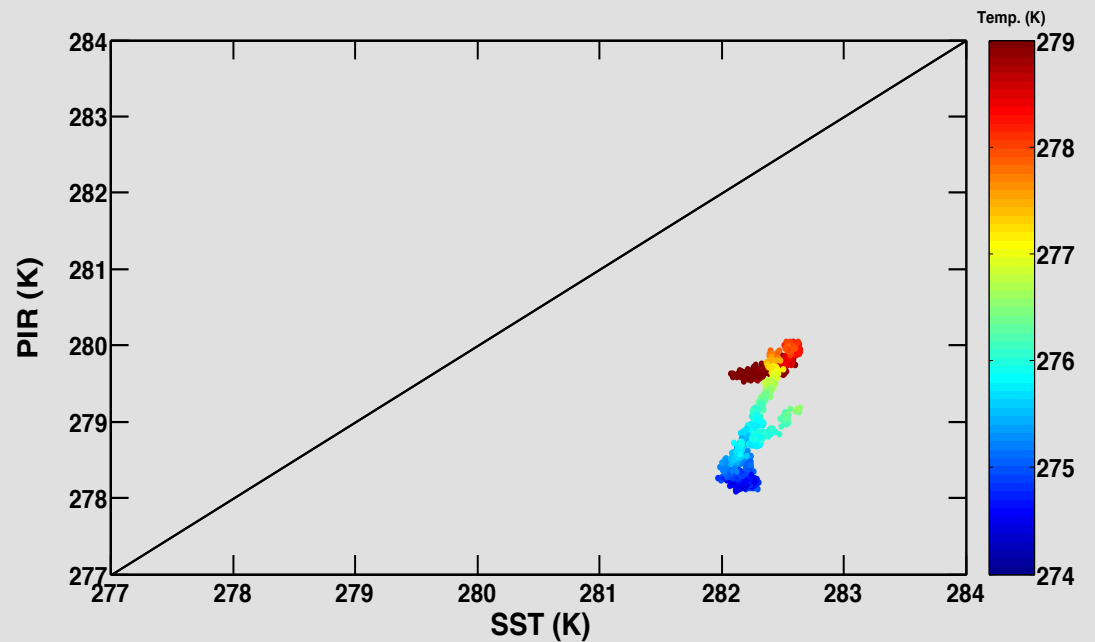
Tower Effect On Clear Winter Day



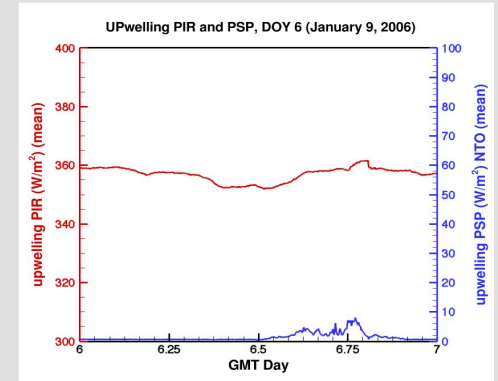
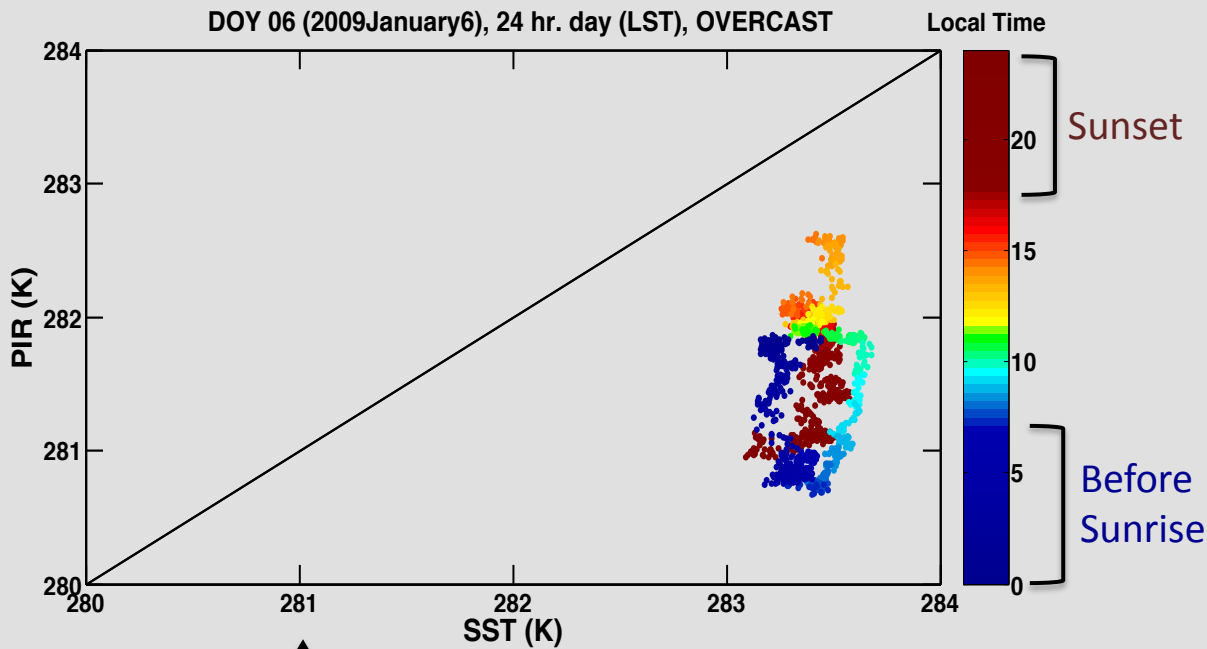
Upwell PIR (K) vs SST (K)
Contoured by Local Time

Upwell PIR (K) vs SST (K)
Contoured by Ambient
Temperature (K)

DOY 09 (2009January9), 24 hr. day (LST), CLEAR



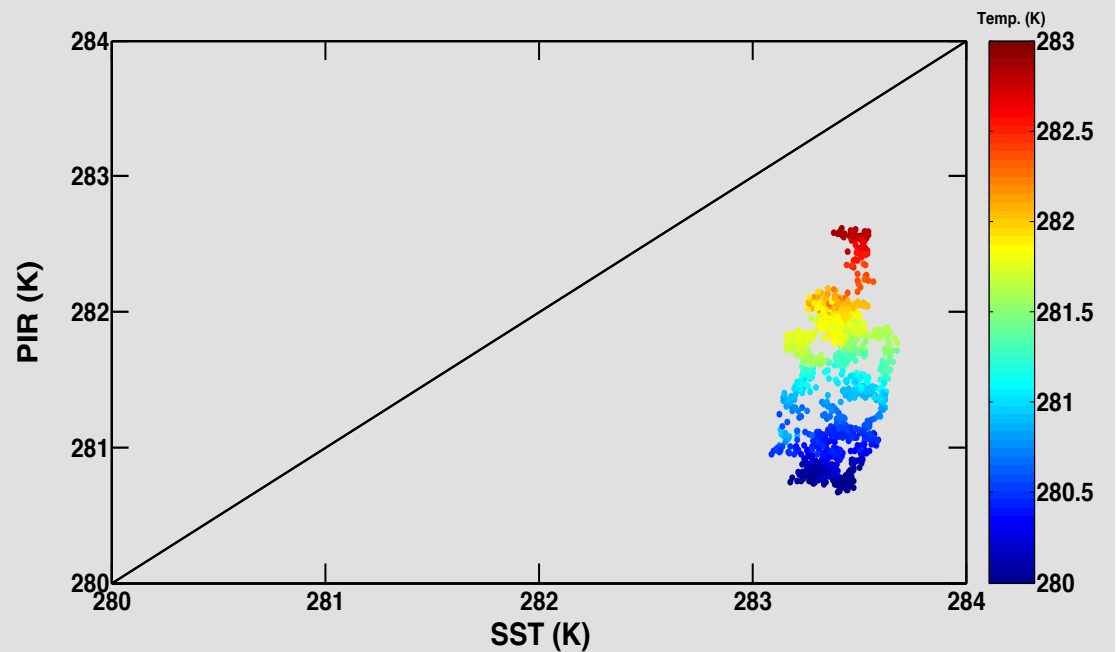
Tower Effect on Overcast Winter Day



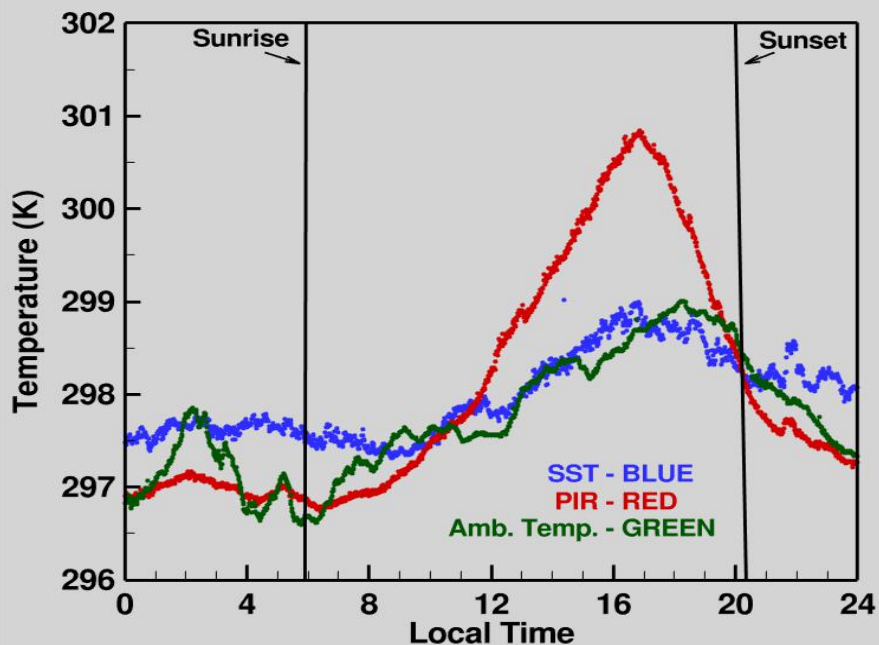
Upwell PIR (K) vs SST (K)
Contoured by Local Time

Upwell PIR (K) vs SST (K)
Contoured by Ambient
Temperature (K)

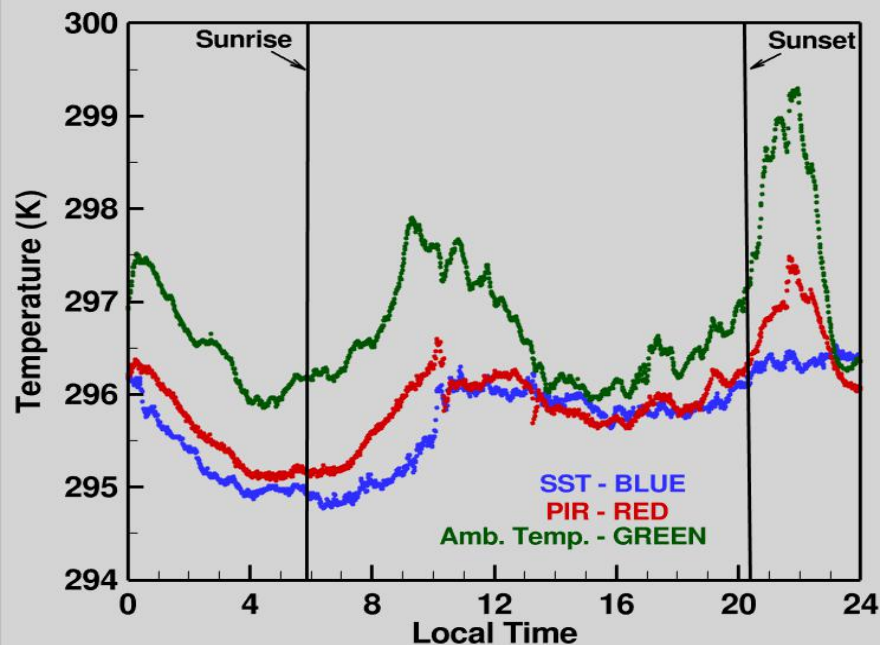
DOY 06 (2009January6), 24 hr. day (LST), OVERCAST



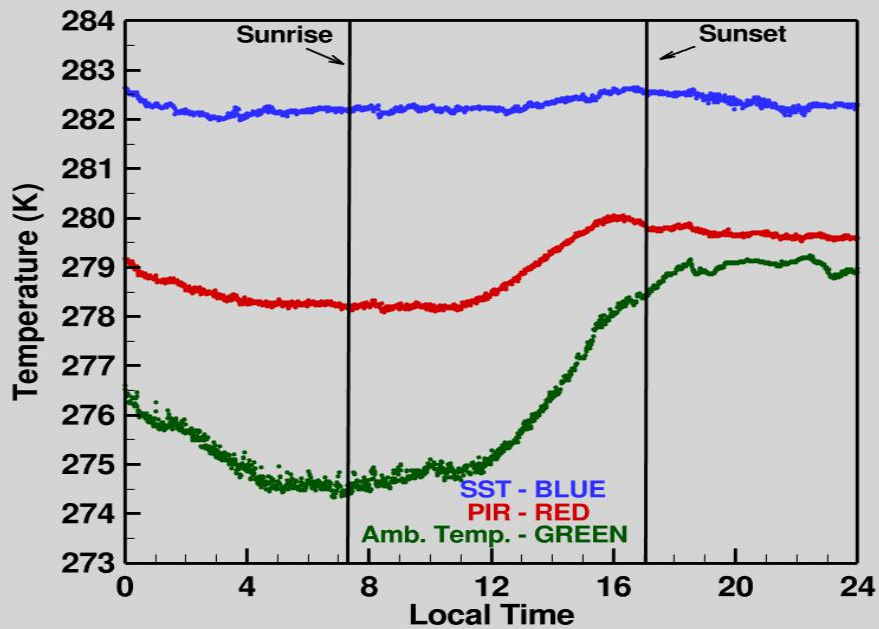
2008 July 17 (DOY 199) Temperature Profile (Clear Day)



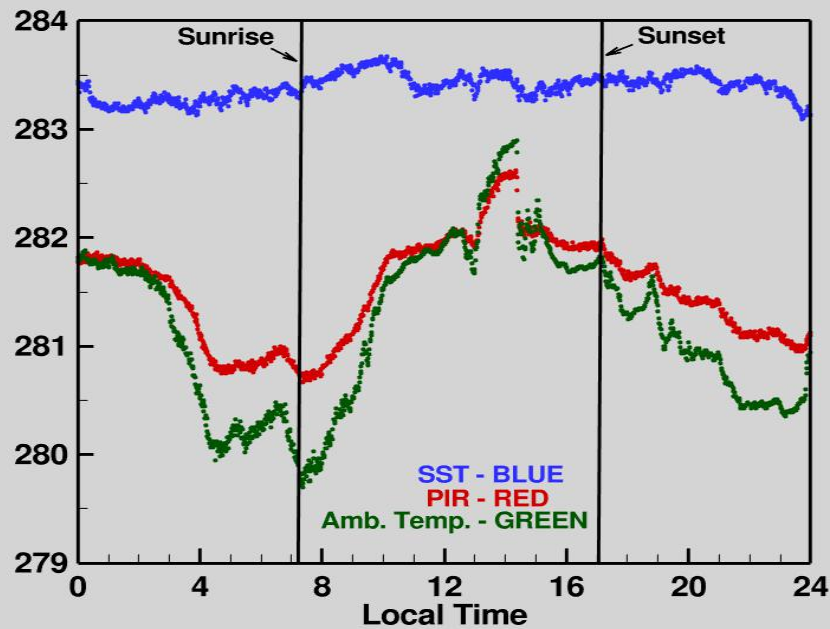
2008 July 9 (DOY 191) Temperature Profile (Overcast Day)



2009 January 9 (DOY 9) Temperature Profile (Clear Day)




2009 January 6 (DOY 6) Temperature Profile (Overcast Day)



Summary:

- CLH was initially established as a satellite validation site, but became a BSRN site shortly thereafter
- CLH has been operating for over 15 years
- Climatology's for Upwelling and Downwelling data show mixed trends
- Trend lines are not always reliable if anomalous data points occur
- The Tower Effect is twofold: Upwell instruments are shaded by the the tower's shadow in the morning and CLH is in the Field of View
- The Tower Effect can be seen in the Upwelling PIR dataset, especially noticeable on a clear day

An aerial photograph of a vast, deep blue ocean under a clear sky. In the center of the frame, a small, white, cylindrical offshore platform or buoy is visible. The water's surface shows subtle ripples and a faint, winding white line, possibly a wake or a boundary. The horizon is a smooth, straight line in the upper third of the image.

Thank you!
Questions or Comments?

Acknowledgements:
Department of Energy
United States Coast Guard